

1500Vdc, Photovoltaic Fuses AC10XLgPV Series



Description

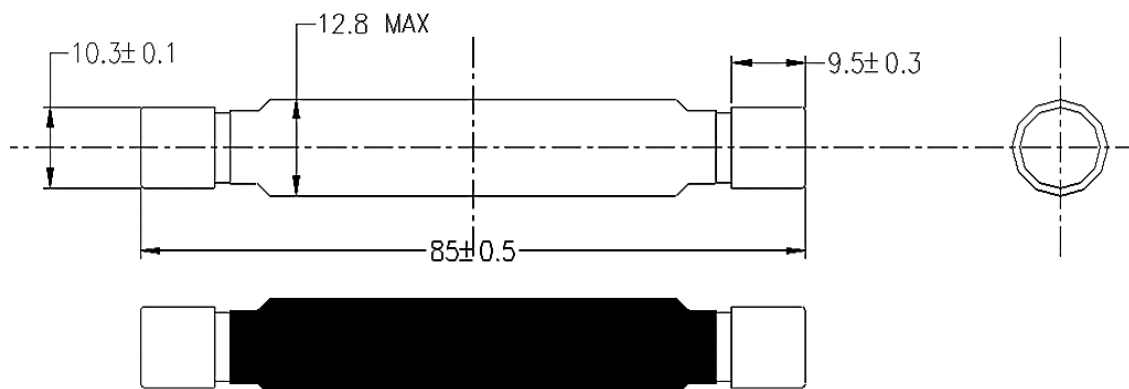
- 1500Vdc Fuse for Solar Applications
- Designed to UL 248-19(2579)
- Capable of withstanding high cycling and low level fault current conditions

Specifications

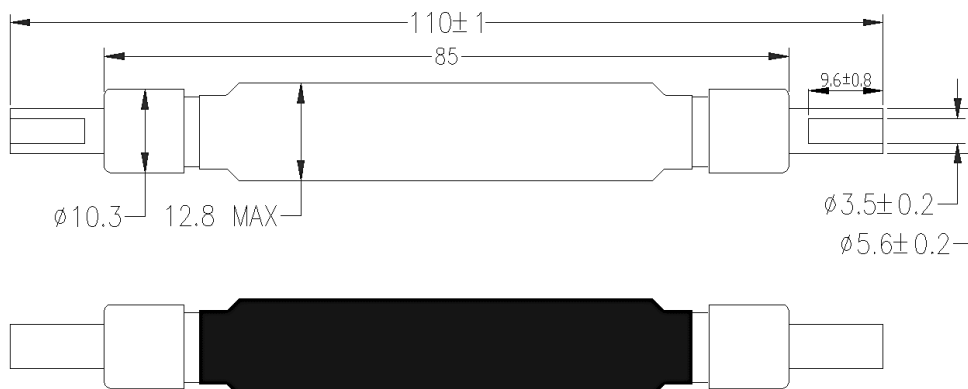
Part No./Rating	Rated Voltage DC	Rated Current	Breaking Capacity	Energy Integrals I^2t (A ² S)		Power Loss (W)	
				Pre-Arcing at 1500V/30kA	Total at 1500V/30kA	0.8In	1.0In
AC10XLgPV20	1500V	20A	30kA	115	820	3.3	6.2
AC10XLgPV25		25A		175	1300	4	5.7
AC10XLgPV30		30A		241	1950	4.5	7.5

Dimensions (unit: mm)

Standard cylindrical (ordering code: AC10XLgPVxx)



In-line with crimp terminals, wire range 10-12 AWG (ordering code: AC10XLgPVxx-l):

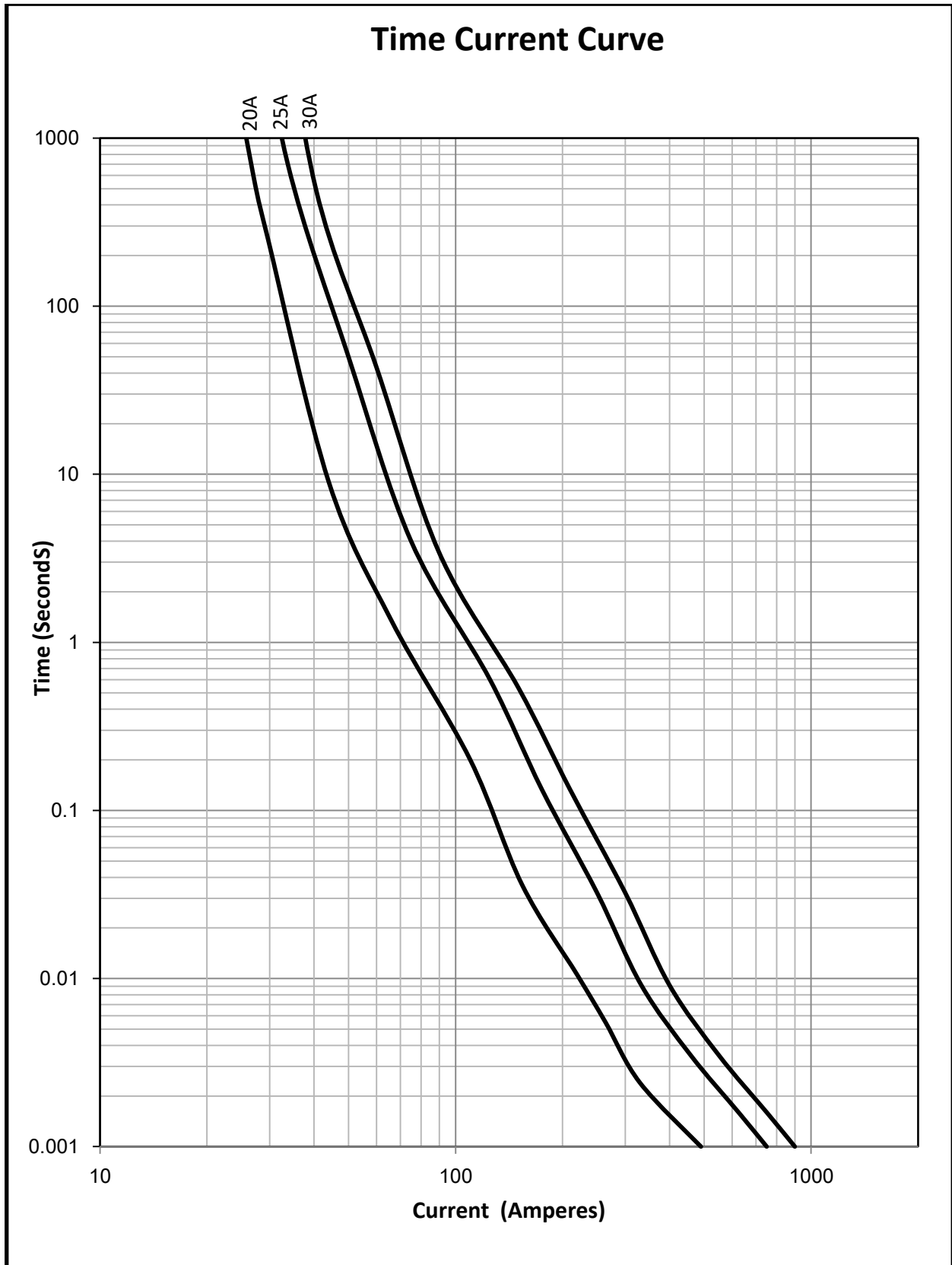


Note: for 10-12AWG (6-4mm²); Recommended Crimping Tool: T&B Sta-Kon ERG4002 or equivalent

1500Vdc, Photovoltaic Fuses
AC10XLgPV Series



Time Current Curve



1500Vdc, Photovoltaic Fuses
AC10XLgPV Series



Temperature Re-Rating Curve

