

1000VDC, High Voltage SMD Fuse A324501 Series



Description

- 4.5x4.5x32mm physical size
- 1000VDC High voltage ,High Breaking Capacity

Electrical Characteristics

% rated current	Opening Time
100%	4hours, Minimum
250%	120sec., Maximum

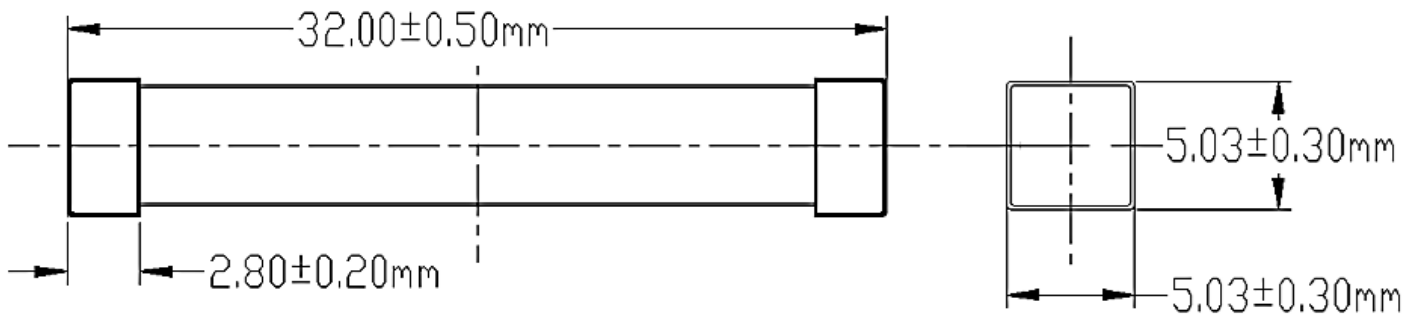


Specifications

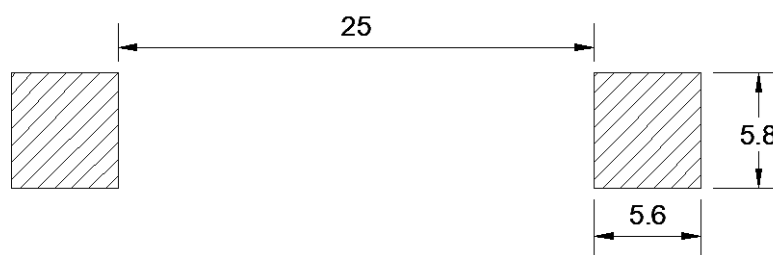
Part No.	Rated Voltage	Rated Current	Breaking Capacity (KA) ¹	Typical Cold Resistance (mohms) ²	Typical Voltage Drop (mV)	Typical Pre-Arcing I ² t (A ² S) ³
A324501.0.8	1000Vdc	800mA	10KA@1000Vdc	560	500	0.65
A324501.1		1A		435	480	1.30
A324501.2		2A		140	415	1.5
A324501.2.5		2.5A		106	385	2.5
A324501.3		3A		90	390	4.0

1. DC Interrupting Rating (measured at designated voltage, time constant of less than 50 microseconds)
2. DC Cold Resistance are measured at <10% of rated current in ambient temperature of 25°C
3. Typical Pre-arcing I²t are measured at 10In Current, DC battery bank.

Dimensions (unit: mm)

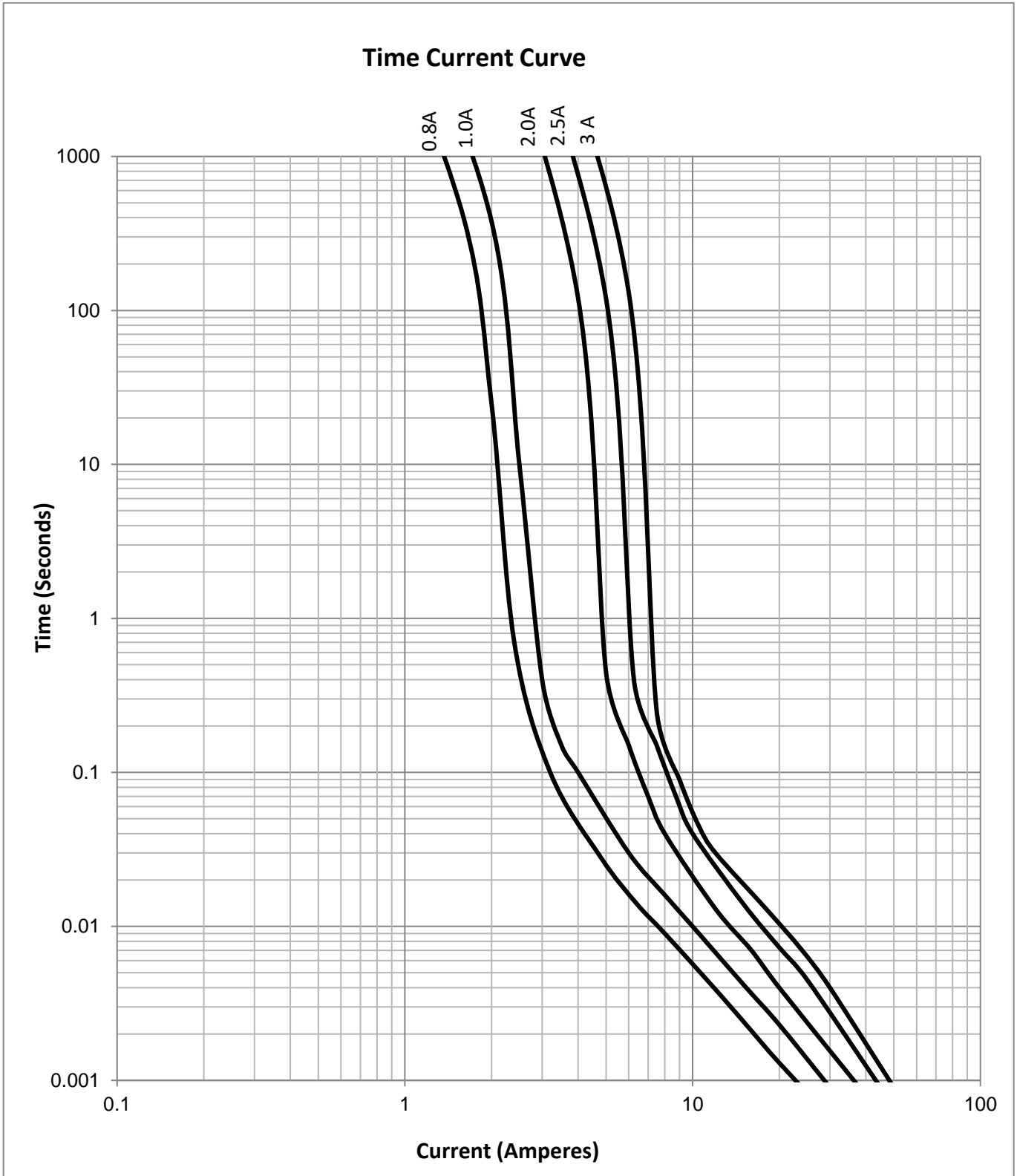


Recommended Pad Layout (unit: mm)



Note: above land pattern recommended for reflow soldering; for hand soldering, consider to make a larger pad.

1000VDC, High Voltage SMD Fuse A324501 Series



1000VDC, High Voltage SMD Fuse A324501 Series



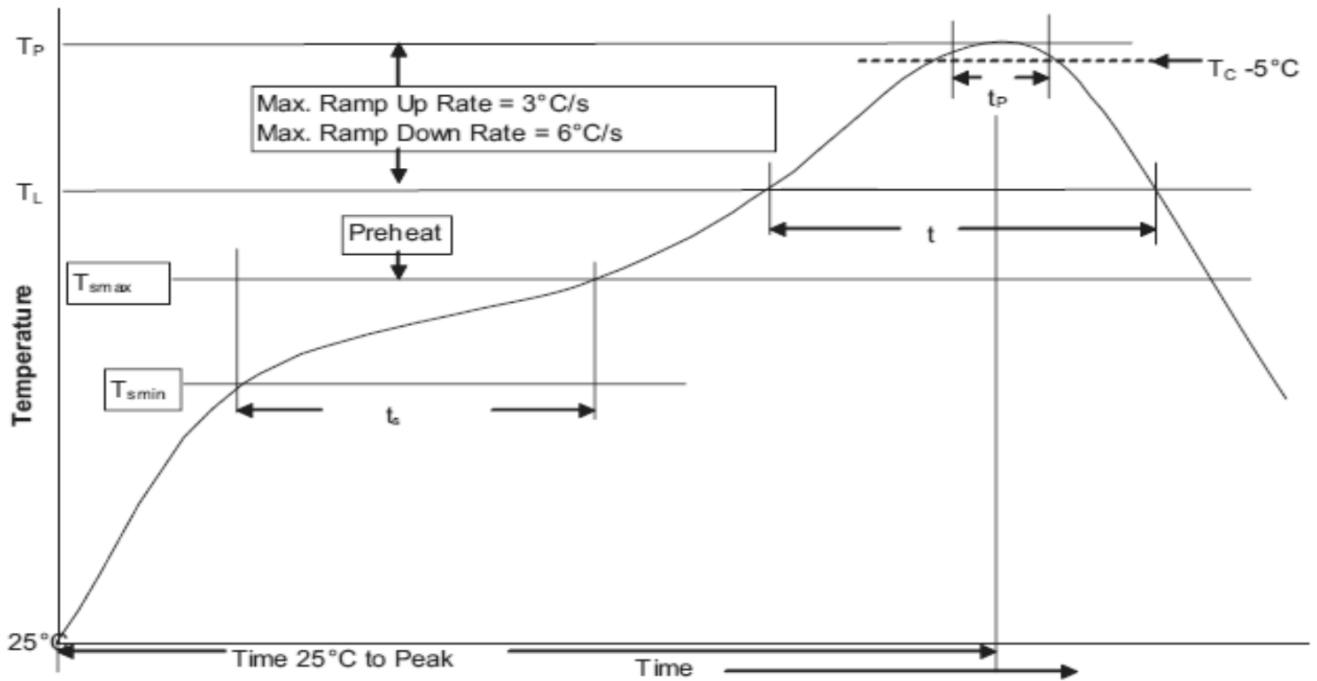
Soldering Characteristics

Reflow Soldering

- Temperature: 260° C
- Time: 30 Seconds Maximum

Manual Soldering (not recommended)

- Temperature: 350° C
- Time: 5 Seconds Maximum



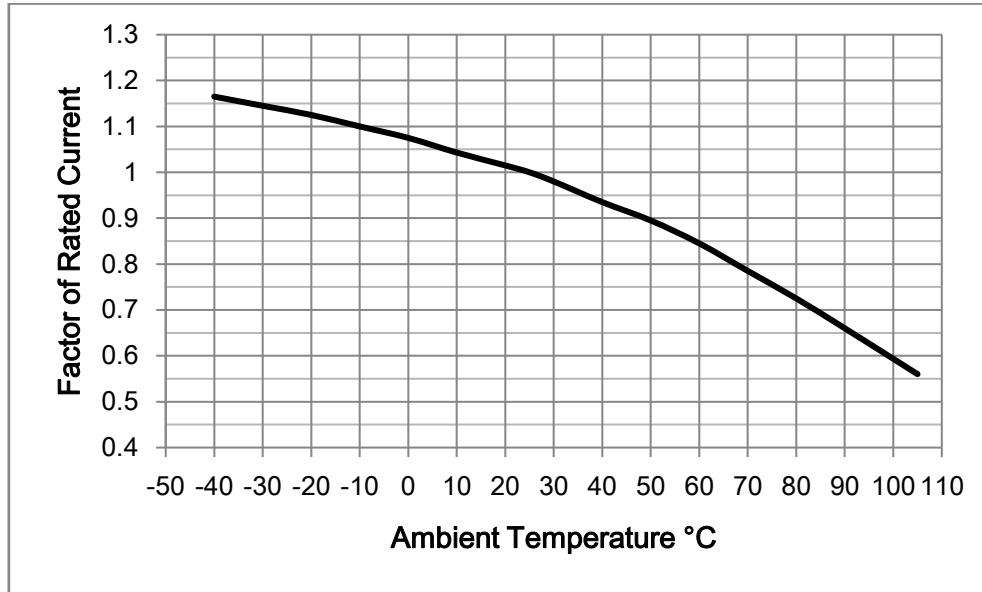
Profile Feature		Lead(Pb) free solder
Preheat and soak	• Temperature min. (T_{smin})	150°C
	• Temperature max. (T_{smax})	200°C
	• Time (T_{smin} to T_{smax}) (t_s)	60 - 120 Seconds
Average ramp up rate T_{smax} to T_p		3°C / Second Max.
Liquidous temperature (T_L)		217°C
Time at liquidous (t_L)		60 - 150 Seconds
Peak package body temperature (T_P)		260°C
Time (t_P) within 5°C of the specified classification temperature (T_C)		30 Seconds
Average ramp-down rate (T_P to T_{smax})		6°C / Second Max.
Time (25°C to Peak Temperature)		8 Minutes Max.

1000VDC, High Voltage SMD Fuse A324501 Series



Temperature Re-rating curve

- Normal Operating Temperature: 25°C
- Operating Temperature: -40°C to 105°C with proper correction factor applied.



Package and Minimum order QTY

1000pcs fuses in tape (width 44mm) and reel (dia. 13inch)